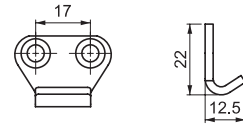
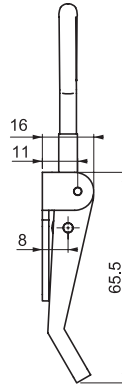
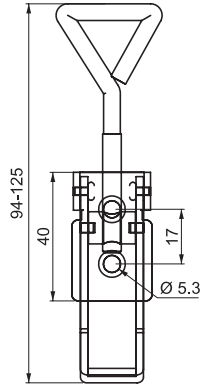


STAINLESS STEEL PRODUCTS

TOGGLE LATCH

340.00.134



Catch plate

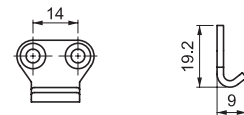
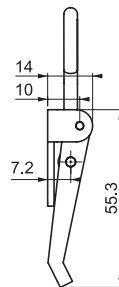
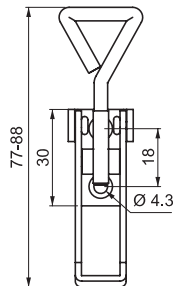
- Used for: tool boxes, cabinets, ships, agriculture and material equipments

MATERIAL

Stainless Steel (AISI 304)

TOGGLE LATCH

340.00.132



Catch plate

- Used for: tool boxes, cabinets, ships, agriculture and material equipments

MATERIAL

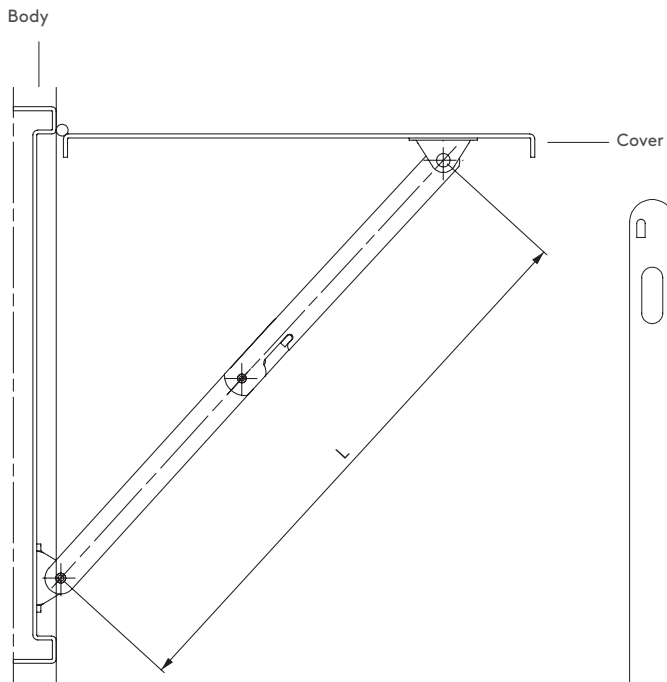
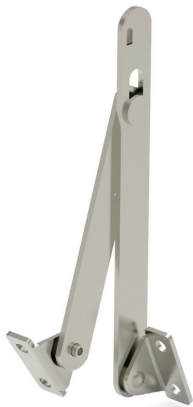
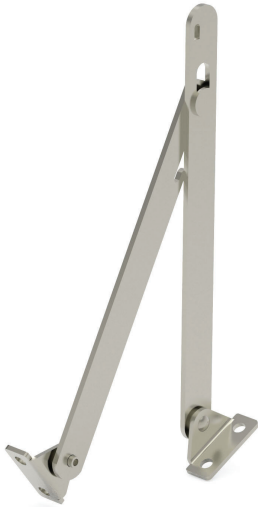
Stainless Steel (AISI 304)

For other materials please check:
page 404

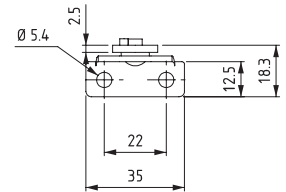
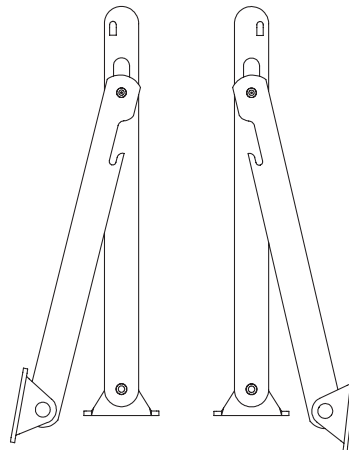
STAINLESS STEEL PRODUCTS

COVER STAY

079



LEFT RIGHT

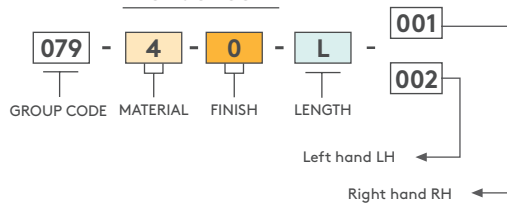


Lmm
292
202
135

MATERIAL
Stainless Steel (AISI 304)

For other materials please check:
page 412

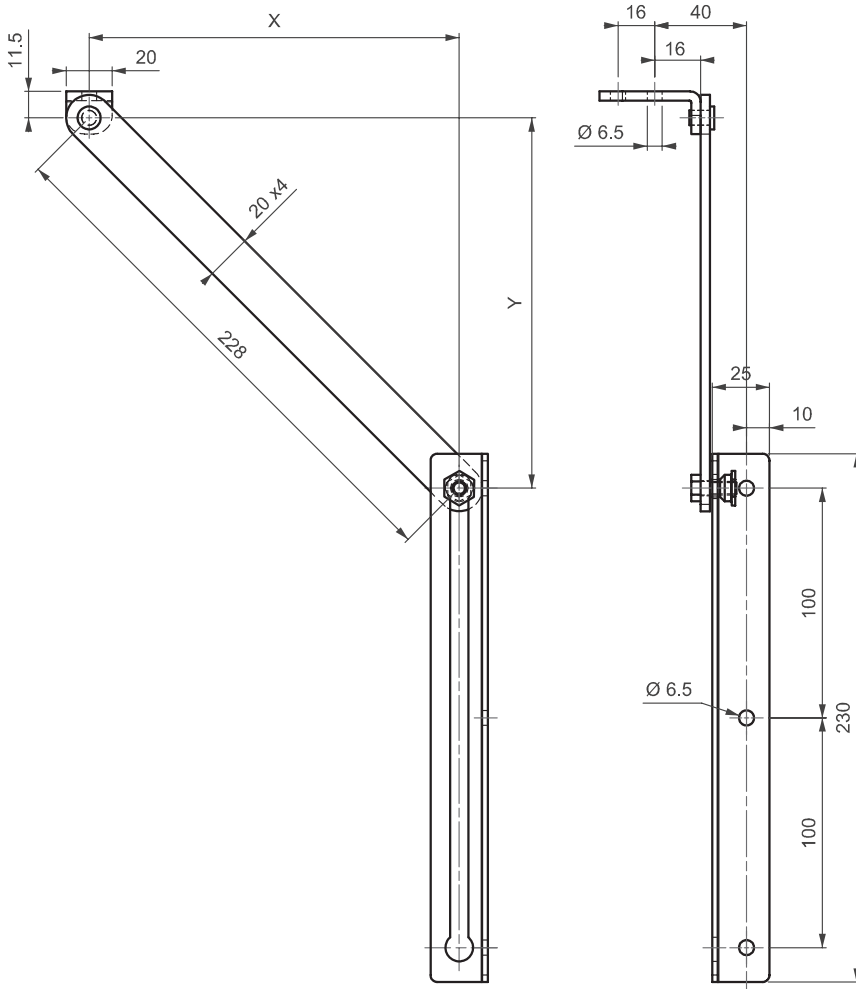
PRODUCT CODE





179

COVER STAY



- Cover Stay with automatic lock to keep the door open
- suitable for left- and right-hand application

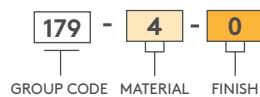
MATERIAL
Stainless Steel (AISI 304)

Installation dimensions

OPENING ANGLE	DIMENSIONS		MINIMAL DOOR WIDTH
	X	Y	
140°	140	180	403
120°	120	166	389
110°	110	150	373
100°	100	146	369

For other configurations:
 $y = X + \text{min.} 40$

PRODUCT CODE



For other materials please check:
page 413